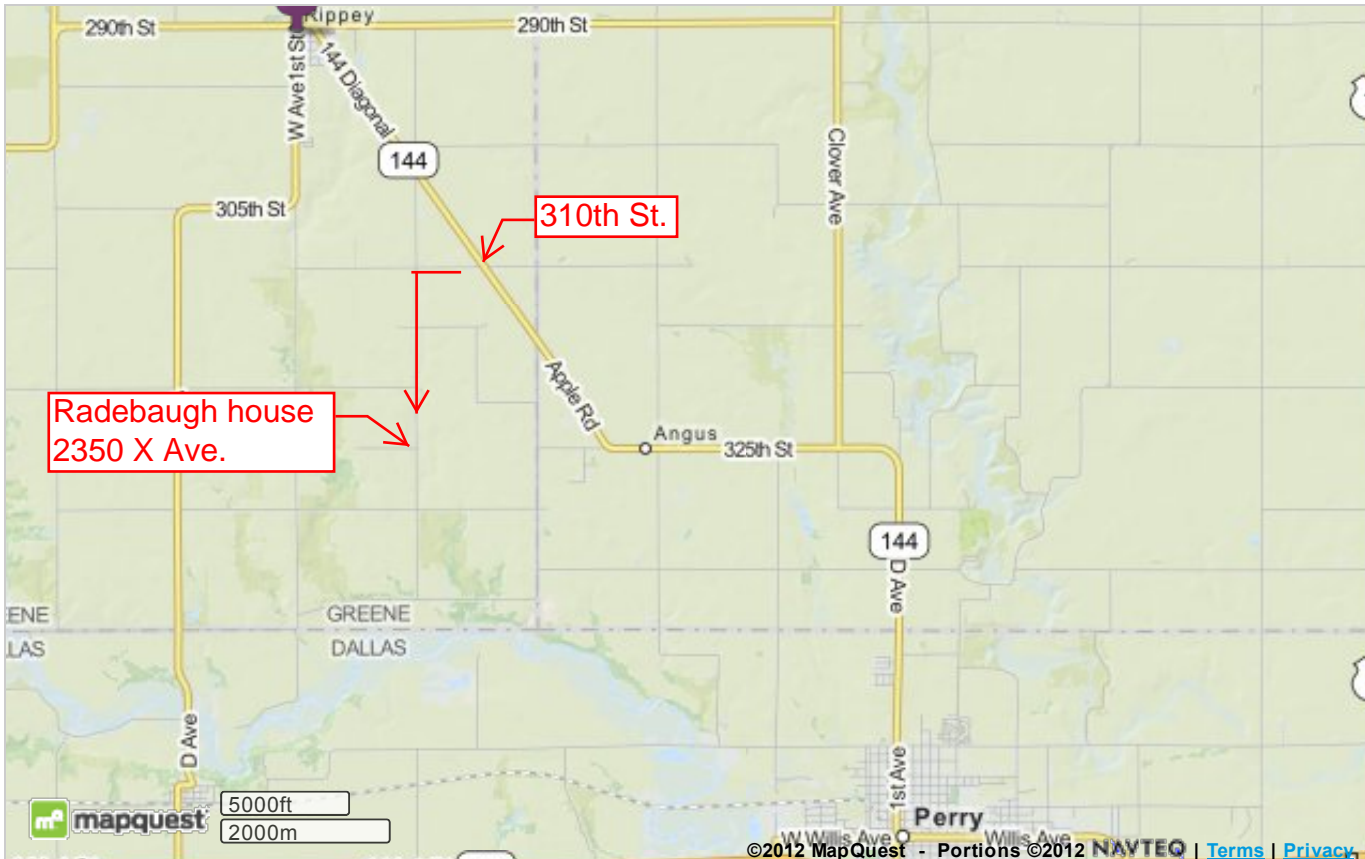




Map of:
Ripsey, IA

Notes

Toni and Colleen Radebaugh
2350 X Ave.
Perry, IA 50220



©2012 MapQuest, Inc. Use of directions and maps is subject to the MapQuest Terms of Use. We make no guarantee of the accuracy of their content, road conditions or route usability. You assume all risk of use. [View Terms of Use](#)

Take Hwy. 141 to Perry

Turn north at the 2nd traffic light (1st St./Hwy. 144) and proceed north through town
Continue north & west on Hwy. 144 five (5) miles from the north edge of Perry.

When the road curves north near some large grain bins, continue north to 310th St.
(at the crest of a hill) and turn left (west) and go to the first intersection.

Turn left (south) on X Ave. and go 1 ½ miles to the place with the ham radio towers.
We are on the west side of the road across a little bridge.

Colleen and Toni Radebaugh - (515) 491-2993 Colleen's cell; (515) 436-7774 home